

Winter 2008

Letter from the President

This is the final letter I am writing as president of Evergreen Meadows Homeowners Association (EMHA) after two years as president (plus an additional year that I spent as Membership chair). I have greatly enjoyed the opportunity to meet residents and play a role in the life of our neighborhood.

Most of EMHA's incumbent board members are stepping down as of the end of this year. These board members have devoted much time and effort into maintaining the quality of our neighborhood, and 2008 proved to be a particularly busy year for many of us in dealing with various issues that came to our attention, while still working at our "day jobs." I want to express my appreciation to our board members for their selfless work, which was made all the more demanding because of vacant board seats.

Happily, our new board, elected at this year's annual member meeting, has already shown a new pro-activity and determination to move ahead on many ideas and initiatives for 2009, including increasing neighborhood involvement, improved association communications, and covenant education. I think our new board members will bring a new energy to the EMHA and I am thankful for their willingness to serve our community.

I hope all members will continue to remain involved in EMHA and its activities. Your support has helped keep Evergreen Meadows a desirable place to live.

Best wishes to you for a happy holiday season and a successful new year.

Sincerely,

Craig Cox
President, EMHA

2009 EMHA Newsletter Volunteers Needed!

The new 2009 EMHA board is seeking volunteers to help us with this newsletter. Specifically, we are looking for the following:

- Writers
- Managing Editor
- Graphic Designer
- Advertising Director



This is an opportunity to build new friendships with your neighbors while helping your community association. If you are interested in one or more of these positions (or if you know someone in the neighborhood who would be a perfect candidate), please contact Carol Pike at 303-674-3748 or Andy Potter at 303-674-0651 and let us know!

2009 Board of Directors

President

Carol Pike 303-674-3748

Vice President

Mark Kelly 303-679-1596

Treasurer

Gary Justus 303-674-3159

Secretary

Mike Dyer 303-679-8332

COMMITTEES

Architectural Review Chair

Carl Pike 303-674-3748

Covenants Control Chair

Gary Justus 303-674-3159

Membership Chair

Andy Potter 303-679-3078

Nominating Chair

Andy Potter 303-679-3078

Special Events Chair

Michelle Parr 720-981-5547

Tami Courtney

OTHER IMPORTANT NUMBERS

Water District

Louise Decker 303-670-0584

Dog and Cat File (Lost Pets)

Mary Richards 303-670-3497

Jeffco Sheriff Liaison

Sean Refro 303-670-4751

Leash Law Offenses

Jeffco Animal Control 303-271-5070

To report sightings of bears and mountain lions

Colorado Division of Wildlife

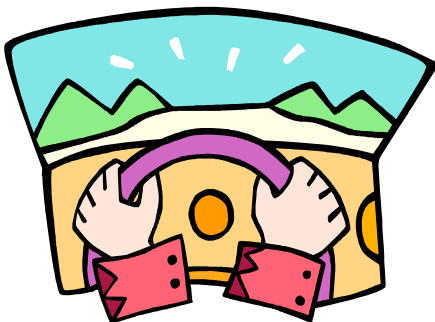
303-297-1192

Driving Evergreen Meadows

by Gary Justus

The recent freezing drizzle November 20 produced some large patches of black ice around the Meadows. It was a good reminder on how we need to safely exit our neighborhood streets onto Highway 73.

On the west side of 73, both Citation Trail and Centaur Drive meet 73 at a steep incline and Centaur has a curve 200 feet before 73. Yet many vehicles speed down these streets at well over the 25 mph speed limit that applies throughout the subdivision. When the black ice hits, usually unseen, suddenly cars are sliding down and some have slid onto 73. The same happens when there is a slight new covering of snow over a warmer roadway. One car on Centaur went all the way across 73 and tipped over the edge!



A reasonable speed for the conditions and occasional tapping of the brakes to test for slipperiness are good strategies to prevent sliding. Remember that ABS brakes, if you have them, have to be held down hard for them to be effective. Yet they can't stop your car in really bad conditions.

On the east side the three entrances are level and two of them (Malamute Drive and Gray Fox Drive opposite Citation) have good sight lines to oncoming traffic. The south end of Gray Fox Drive (near Valley Hi Ranch) has a poor view of oncoming traffic, especially to the south where a small rise can obscure traffic. Sadly, many vehicles traveling 73 think the 40 mph speed limit really means 45 or 50, which makes entering here quite dangerous.

What can you do to be safe exiting Evergreen Meadows? I would suggest: 1) Come to a full stop first; 2) look both ways twice before starting, even if turning right; 3) be patient and yield the right of way for any oncoming traffic less than 800 feet away; 4) avoid that cell phone; and 5) parents, teach these tips to your new drivers well. Let's be careful out there!

I welcome suggestions for additional topics about driving in EM or any other topics.

Gary Justus, 2009 EMHA Treasurer, 303-674-3159

TADRACO INC.

New construction, additions, remodels, decks, siding, windows. Resident Contractor with 25 plus years of experience in the Evergreen, Conifer area. Guaranteed Quality work. We can help you plan all phases of your construction project.

FREE CONSULTATIONS!

Please call 303 475-2588 or 303 679-9585



Your Fence Professional

Dan Griffin
Owner/Operator
303-674-6561

10 Years experience in Evergreen Area
Split Rail - Western Dowel - Chain Link - Privacy
Ornamental - Entry Ways - Custom - Repairs
Snow Removal

References / Fully Insured

Custom Electric & Power



Serving the Evergreen Meadows Area

Master Expert in
Residential, Commercial and Service Work

Call For Free Estimates
303-674-6962

Call Today to Schedule a Chocolate Party!



HEARTFELT, LLC
Julie Martens, RN BSN
303.929.7008

Contact Julie to purchase Xocai wholesale.
julmartens@msn.com - www.chocolate4theheart.com

*These statements have not been evaluated by the Food & Drug Administration. This product is not intended to diagnose, treat, cure or prevent disease.

Healthy Chocolate

“Xocai (sho-sigh): A Gift of Health”

The most powerful, health-promoting chocolate ever produced!

Full of Antioxidants Supports Cardiovascular Health
Diabetic Friendly Caffeine Free
Promotes Weight Control Gluten Free
Promotes Dental Health

**Perfect gift for patients, clients
& employees. Sell in your place
of business or practice.**



Need a Babysitter?

Call **Rachel** or **Nicholas Mizenko** at 303 670-1716.

We completed our Baby-Sitter Class at Evergreen Parks and Rec.

Pet-sitting by Sammie

Samantha Richardson offers caring and thoughtful **pet-sitting services** for dogs and cats in the Evergreen Meadows area. She's also available for **dog-walking** and **grooming**.

Please contact her at 303-674-0406.

ROBERT J. POTRYKUS ATTORNEY AT LAW



806 16TH ST., GOLDEN
720-261-0860
www.rjplawyer.com

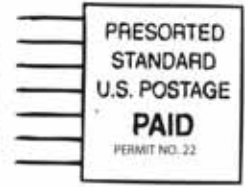
The Meadowlark is a publication of the
Evergreen Meadows Homeowners' Association.
See our website at www.emha.us

If you would like to submit an article of interest or for advertising information please contact president@emha.us.

The Evergreen Meadows Homeowners' Association meets on the FOURTH Thursday of every other month at Conference Baptist Church (SE corner of No Turkey Creek & Hwy 73) at 7:00 p.m. The public is encouraged to attend.
Please email president@emha.us to confirm the date if you want to attend.



P.O. Box 2228
Evergreen, Colorado 80437



Holiday Lighting Contest

Calling all Homeowners to create, decorate and illuminate with holiday spirit!

Homeowners get ready, put away the turkey trimmings, and bring out the Holiday lights. This year's Holiday lighting contest will be judged on Thursday, December 18, 2008.

If selected, your household will receive the prestigious "Holiday Decoration Award". As a recipient, your membership dues for the EMHA year of May 2009 -2010 will be waived. The three winners will be announced on our web site, www.EMHA.us, on December 25, 2008.

Let's brighten up our homes and bring holiday cheer to our neighbors!